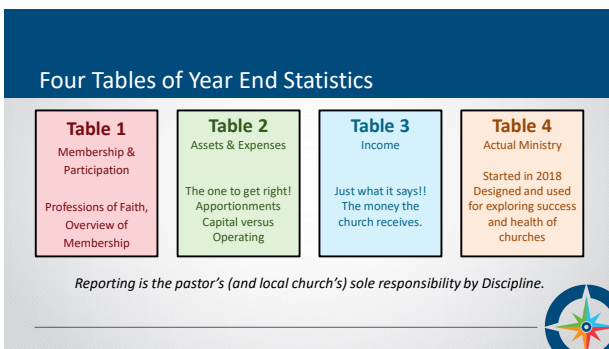




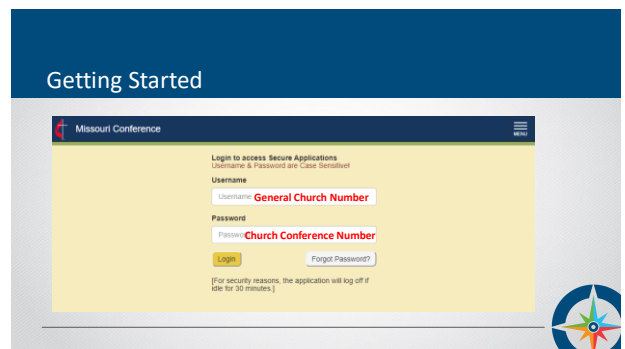
1



2



3




4

Getting Started

Apportionment Support Report & Remittance Form


<p>Missouri Conference The United Methodist Church 3601 Amron Court Columbia MO 65202 Conference Phone: (573) 441-1770</p> <p>Charles Wesley First Wesley UMC 101 N 6th St Cameron, MO 64429</p>	<p>December 2019 Including deposits received through 12/31/2019</p> <p>Church Conference Number → 1133</p> <p>GCFA Number → General Church ID: 502683</p> <p>Pastor: Charles Wesley Treasurer: Treasurer</p>
--	---



5

Ground Rules for 2020

- ✓ Cut yourself some slack.
- ✓ A special rule for Table I called "when in doubt".
- ✓ Table II should be the priority.
- ✓ Think about Table IV in a new way. Be honest and share victories.
- ✓ It's the pastor's responsibility, BUT Laity please help!

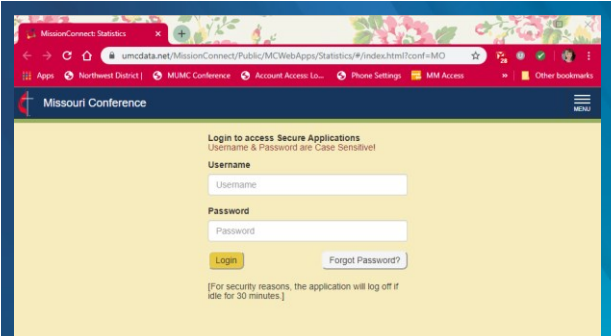


6

Getting Started – Information Needed

<p style="text-align: center; color: #c00000; font-weight: bold;">Table 1</p> <p style="font-size: small;">Worship Attendance Membership Data Small Groups UMM & UMW Info Mission & Outreach</p>	<p style="text-align: center; color: #006633; font-weight: bold;">Table 2</p> <p style="font-size: small;">Insurance Info Account Statements Check Registry Expense Reports Trustees Reports</p>	<p style="text-align: center; color: #0070c0; font-weight: bold;">Table 3</p> <p style="font-size: small;">Pledge Campaigns Offering Details Income Reports Special Giving Grants Received</p>	<p style="text-align: center; color: #c00000; font-weight: bold;">Table 4</p> <p style="font-size: small;">Worship Attendance Professions of Faith Community Outreach New Small Groups Mentored Leaders Volunteers School Partnerships</p>
--	--	--	--

7



The screenshot shows a web browser window with the URL `umcdata.net/MissionConnect/Public/MCWebApp/Statistics/#index.html?conf=MO`. The page title is "Missouri Conference". Below the navigation bar, there is a login section titled "Login to access Secure Applications" with a sub-note "Username & Password are Case Sensitive!". It includes input fields for "Username" and "Password", a "Login" button, and a "Forgot Password?" link. A security notice at the bottom states: "[For security reasons, the application will log off if idle for 30 minutes.]".

8

Table II: Assets & Expenses (The one to get right!)

Expenses and Apportionment Formula- Lines 39-47

These lines are used to calculate both Conference & District apportionments. You do NOT want to over- or under-report!

Program (Line 46) and Operating (Line 47) Expenses do NOT include "capital," "debt payments" or amounts given for missions. They only include the amount spent on the programs. Those amounts are reported elsewhere.

9



Deadline to Submit is January 14, 2020

10



Megan Hayes
 mhayes@moumethodist.org
 816-649-5028

MOUMETHODIST.ORG

11